

Figure 6: Alternative Haul Routes identified by iTrans Consulting Inc.

— - Alternative Haul Routes

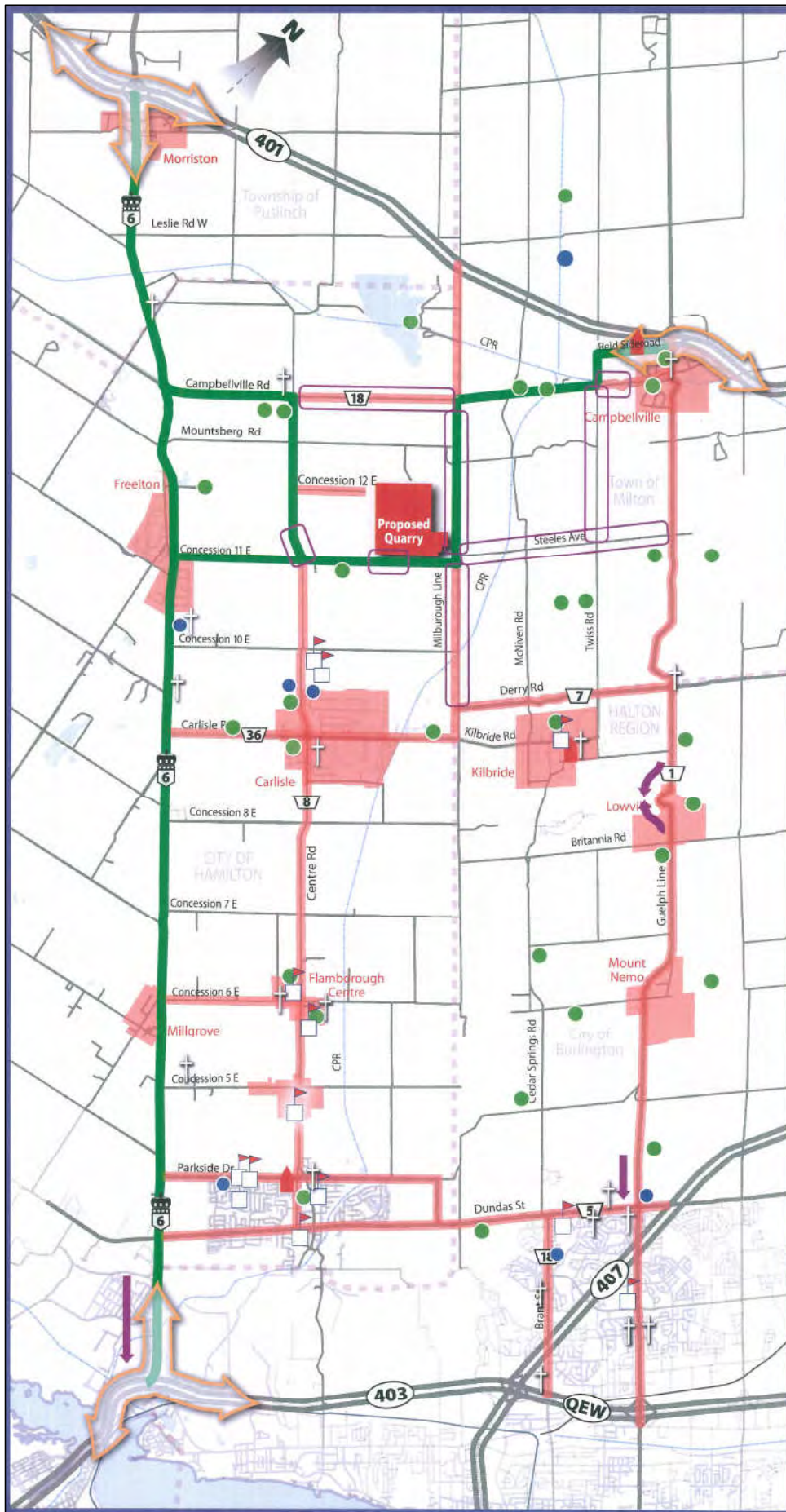


Figure 6B: Alternative Haul Routes by Identifying LINK Number

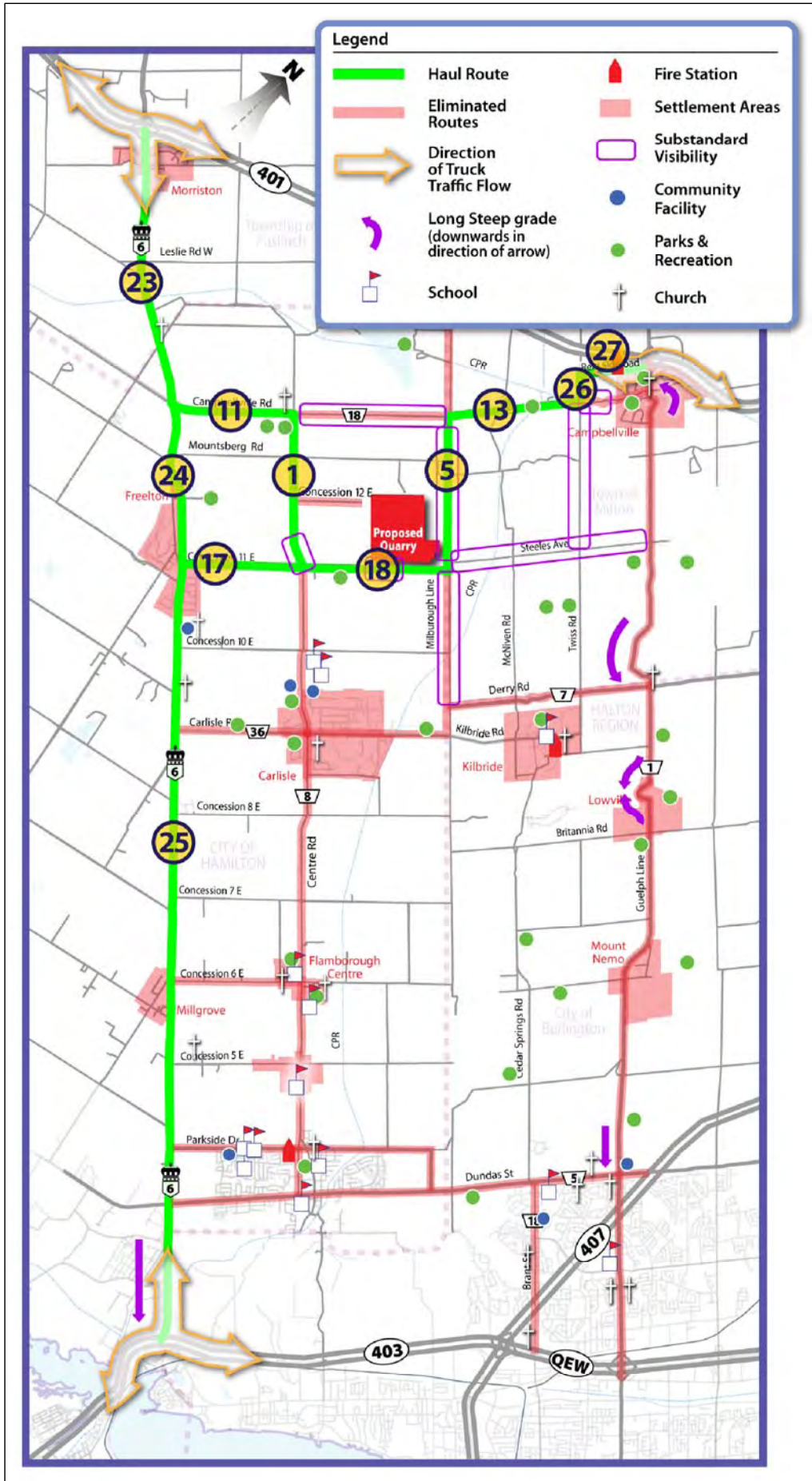
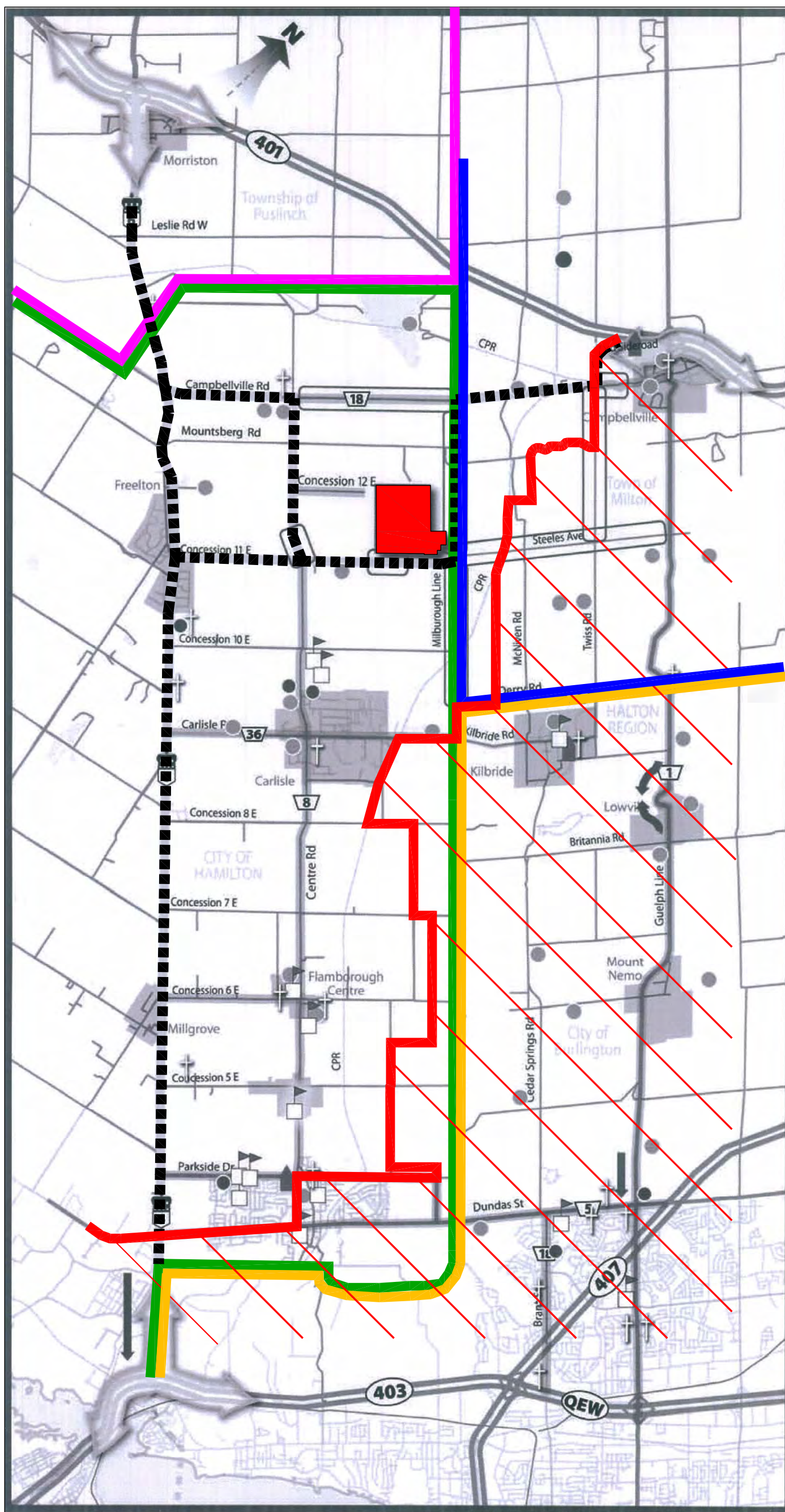


Figure 7: Municipal Official Plan Jurisdictions
Overlay on Alternative Haul Routes



- Proposed Quarry
- Alternative Haul Routes
- Niagara Escarpment Plan
- Milton Official Plan
- Hamilton Official Plan
- Puslinch (Wellington County Official Plan)
- Burlington Official Plan

Figure 8: Alternative Haul Routes on County of Wellington Official Plan (Puslinch)

Schedule A7 PUSLINCH



Legend

The Urban System

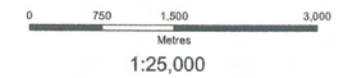
- H Hamlet Area
- UC Urban Centre

Other Designations

- Mineral Aggregate Area¹
- Policy Areas
- Proposed Major Roadways
- Provincial Earth Science ANSI
- Core Greenlands
- Greenlands
- Primary Agricultural
- Secondary Agricultural
- Country Residential
- Recreational
- Rural Industrial

Landfill Site

Proposed Interchange



¹ - Existing licensed aggregate operations (sand, gravel, bedrock) are shown in Appendix 2 for information purposes.

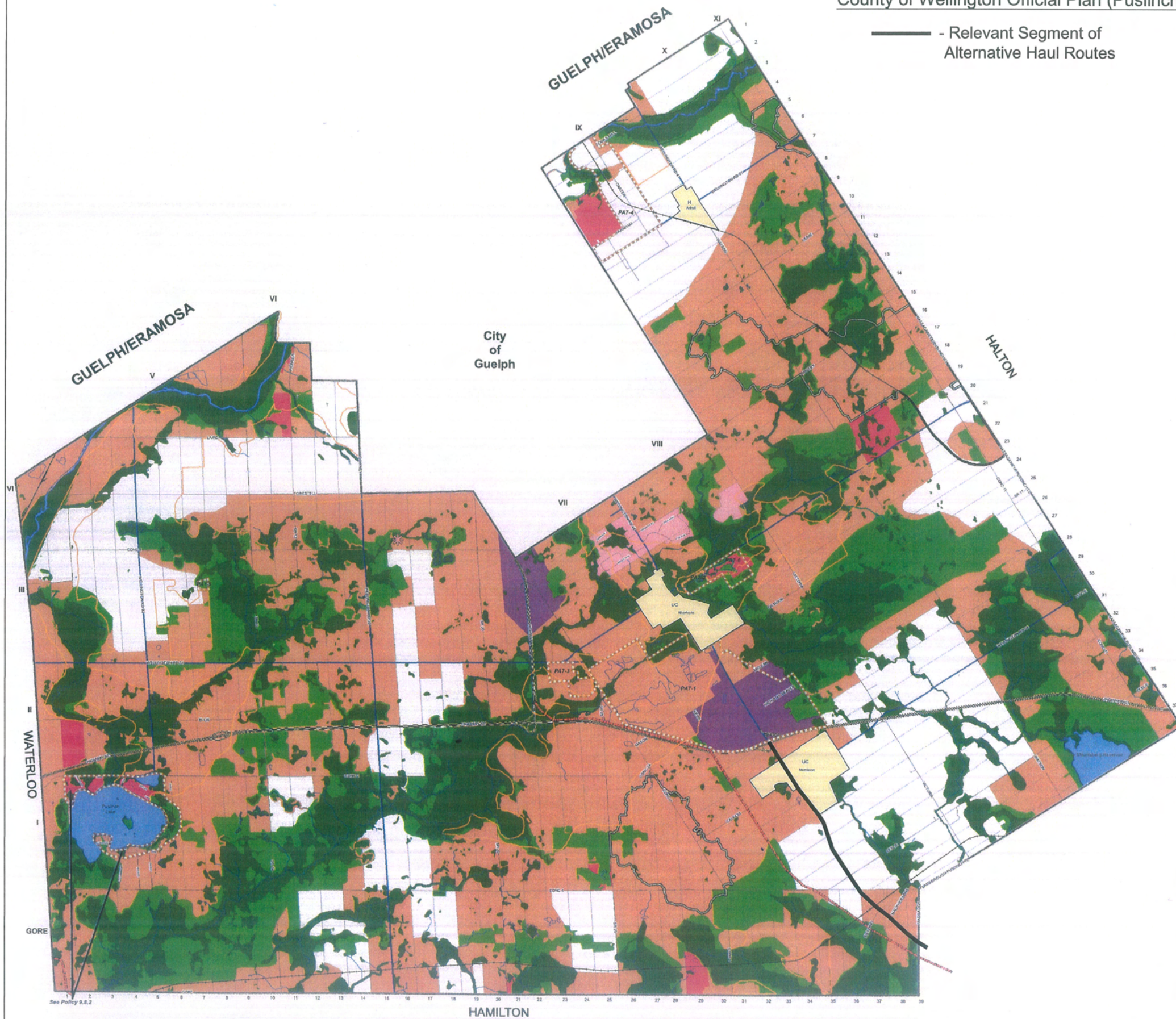
This is not survey data. All rights reserved. May not be reproduced without permission.

Sources: County of Wellington, Planning and Development Department, Ministry of Natural Resources, Grand River Conservation Authority, Hamilton Region Conservation Authority, and Conservation Halton, Upper Grand District School Board.

Produced using natural resource information provided by local Conservation Authorities and the Ministry of Natural Resources (Copyright Queen's Printer, 1997).

Updated: February 4, 2008

Date Printed: February 7, 2008



See Policy 9.8.2

HAMILTON

Figure 9: Morriston Urban Centre (Puslinch)

MORRISTON

TOWNSHIP OF PUSLINCH

Schedule A7-2



1:8,500

Sources:
County of Wellington Planning Department,
Grand River Conservation Authority,
Hamilton Region Conservation Authority
and Conservation Halton,
Ministry of Natural Resources.

This is not survey data.

Parcels - Wellington County 2005, Teraset 2002.
All rights reserved. May not be reproduced without permission.

Legend

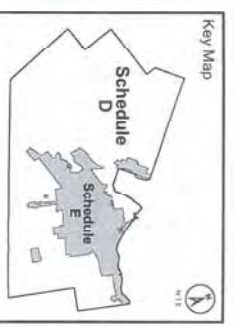
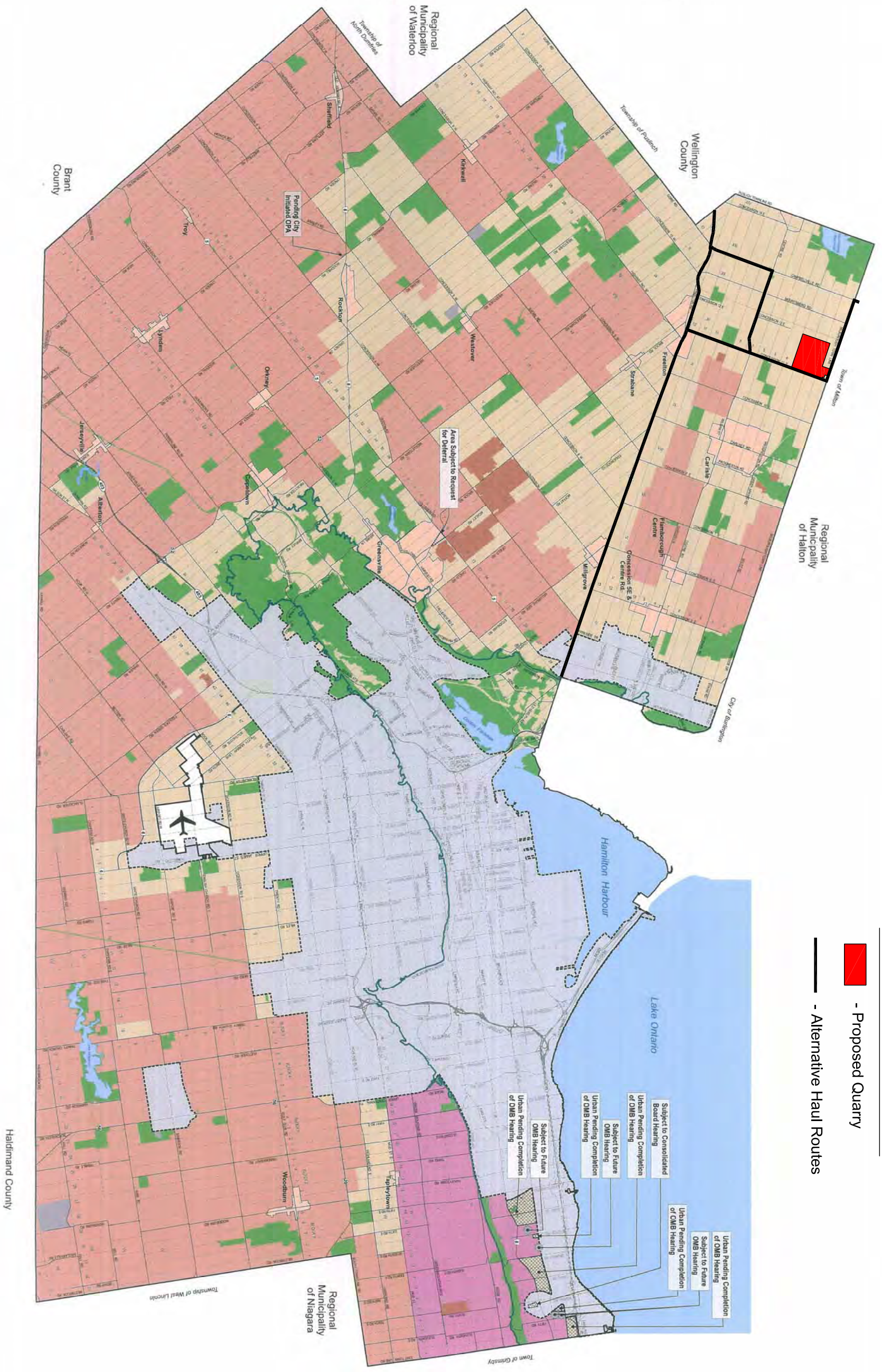
Designation

-  Residential
-  Central Business District
-  Core Greenlands
-  Greenlands
-  Community Improvement Area
-  Watercourses
-  Ponds

Update: March 22, 2005
Date Printed: February 7, 2008

Figure 10: Alternative Haul Routes Overlay on Hamilton Rural Official Plan

- Proposed Quarry
- Alternative Haul Routes



Note: For Urban Land Use Designations please refer to Schedule E (Future amendment)

Legend

- Agriculture
- Specialty Crop
- Rural
- Mineral Aggregate Resource Areas
- Open Space
- Utilities
- Rural Settlement Areas
- Urban Pending Completion of OMB Hearing
- Subject to Consolidated Board Hearing
- Subject to Request for Deferral
- Subject to Future OMB Hearing
- John C. Munro Hamilton International Airport
- Municipal Boundary
- Urban Boundary
- Niagara Escarpment
- Urban Area (Subject to a Future Amendment)

Council Adoption: September 27, 2006
Ministerial Approval: Pending

Hamilton Official Plan Schedule D Rural Land Use Designations

Figure 11: Waterdown Sportsman's Club Site Specific Area

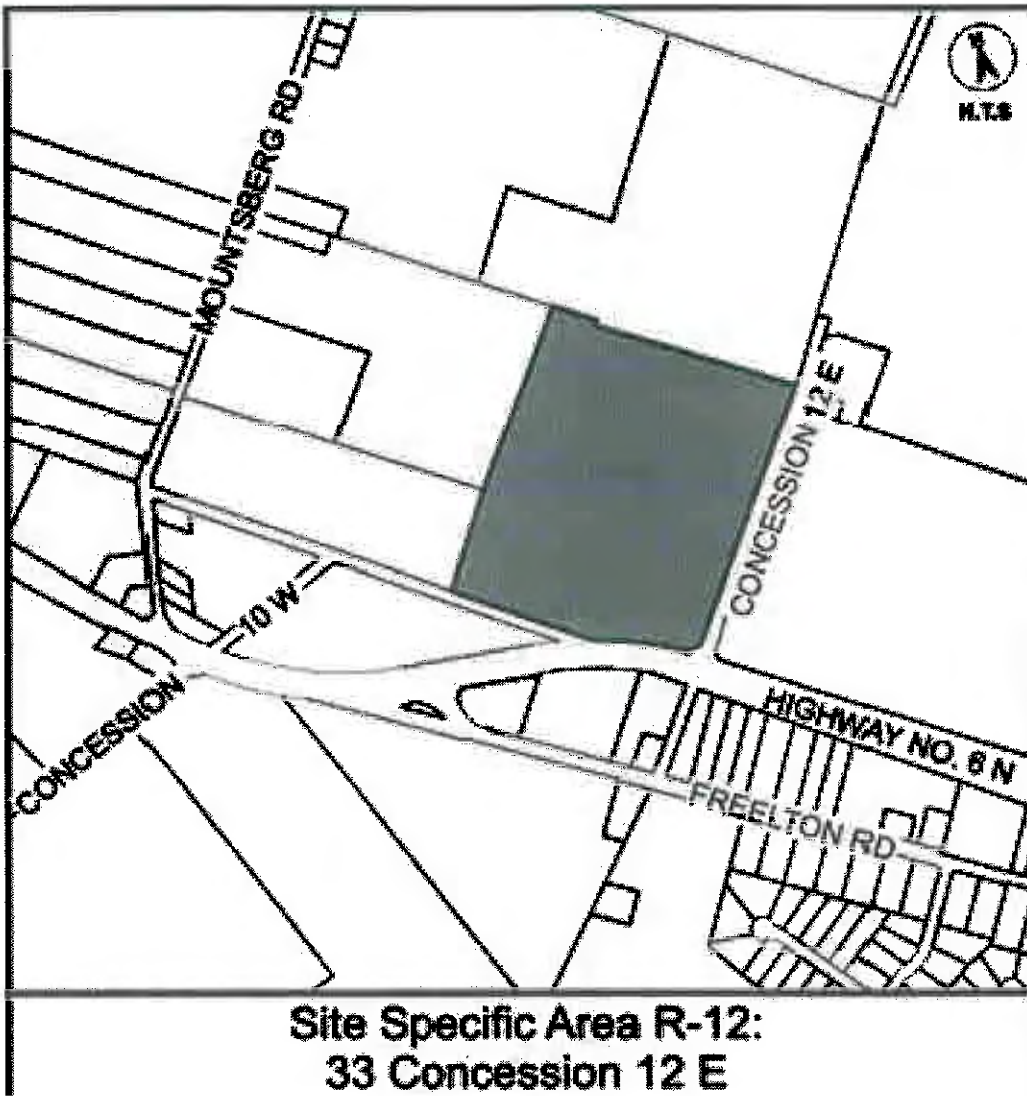


Figure 12: Harper's Corner Site Specific Area

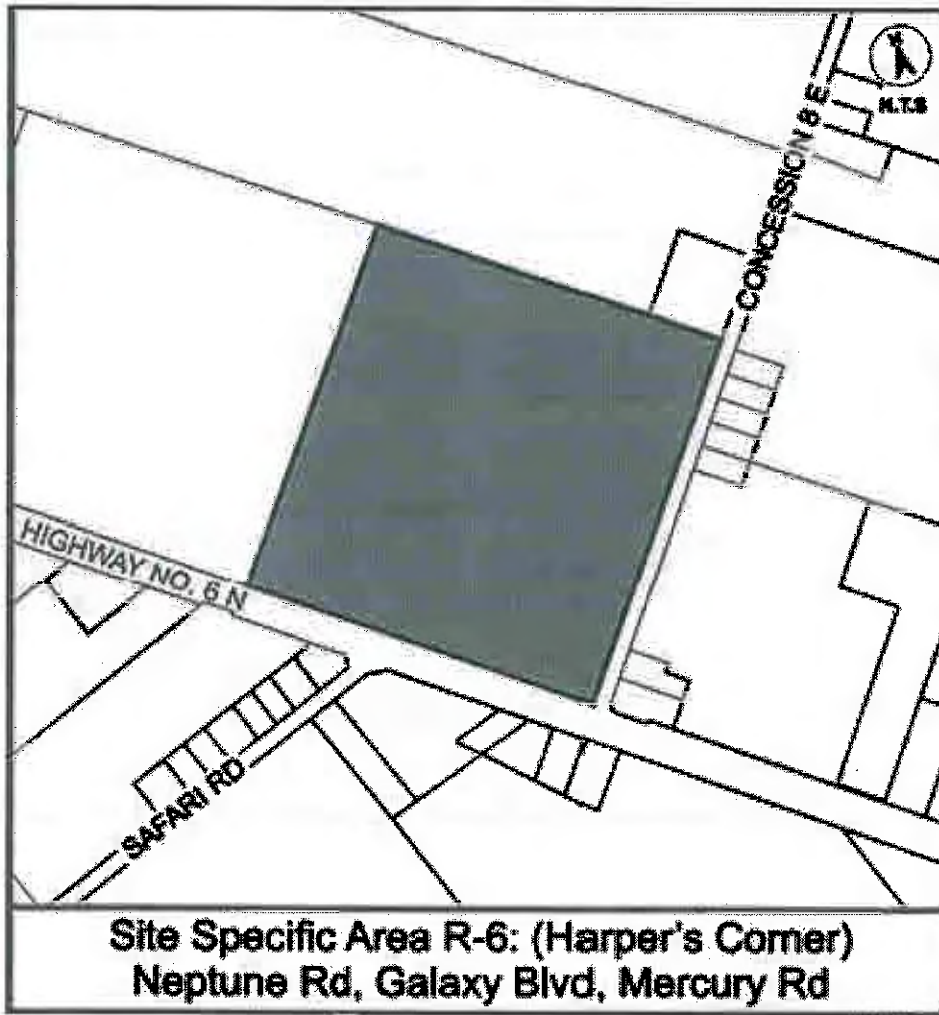




Figure 13: Freelon Rural Settlement Area





Legend:

 Settlement Area Boundary

Land Use Designations:

 Settlement Residential


 Settlement Commercial

 Hazard Lands

Open Space and Parks Designations:

 Community Park

 General Open Space

 Parkette

**Volume 2: Map 7
Freelon Rural Settlement Area Plan**

Hamilton Official Plan
Council Adoption: September 27, 2006
Ministerial Approval: Pending

